



CD2BP2 Polyclonal Antibody

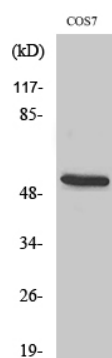
Catalog No	YP-Ab-13891
Isotype	IgG
Reactivity	Human;Monkey
Applications	WB;IHC;IF;ELISA
Gene Name	CD2BP2
Protein Name	CD2 antigen cytoplasmic tail-binding protein 2
Immunogen	The antiserum was produced against synthesized peptide derived from human CD2 Tail-binding. AA range:101-150
Specificity	CD2BP2 Polyclonal Antibody detects endogenous levels of CD2BP2 protein.
Formulation	Liquid in PBS containing 50% glycerol, 0.5% BSA and 0.02% sodium azide.
Source	Polyclonal, Rabbit,IgG
Purification	The antibody was affinity-purified from rabbit antiserum by affinity-chromatography using epitope-specific immunogen.
Dilution	WB: 1/500 - 1/2000. IHC: 1/100 - 1/300. ELISA: 1/40000.. IF 1:50-200
Concentration	1 mg/ml
Purity	≥90%
Storage Stability	-20°C/1 year
Synonyms	CD2BP2; KIAA1178; CD2 antigen cytoplasmic tail-binding protein 2; CD2 cytoplasmic domain-binding protein 2; CD2 tail-binding protein 2
Observed Band	50kD
Cell Pathway	Cytoplasm. Nucleus. Predominantly nuclear.
Tissue Specificity	Aorta,Brain,Epithelium,Liver,Lung,
Function	similarity:Contains 1 GYF domain.,subunit:Binds the cytoplasmic domain of CD2 through the GYF domain.,
Background	This gene encodes a bi-functional protein. In the cytoplasm, the encoded protein binds the cytoplasmic tail of human surface antigen CD2 via its C-terminal GYF domain, and regulate CD2-triggered T lymphocyte activation. In the nucleus, this protein is a component of the U5 small nuclear ribonucleoprotein complex and is involved in RNA splicing. A pseudogene has been identified on chromosome 7. Alternative splicing results in multiple transcript variants but their biological validity has not been determined. [provided by RefSeq, Nov 2008],
matters needing attention	Avoid repeated freezing and thawing!



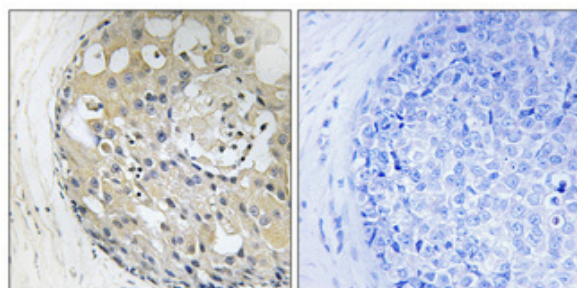
Usage suggestions

This product can be used in immunological reaction related experiments. For more information, please consult technical personnel.

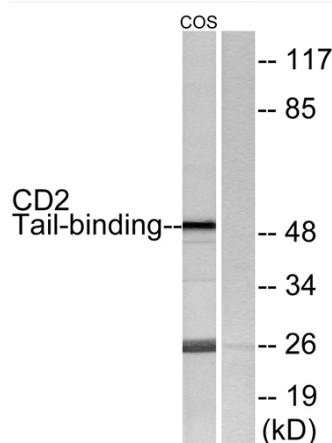
Products Images



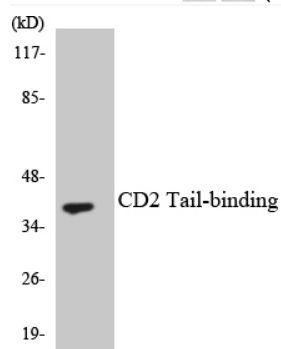
Western Blot analysis of various cells using CD2BP2 Polyclonal Antibody diluted at 1:1000



Immunohistochemical analysis of paraffin-embedded Human breast cancer. Antibody was diluted at 1:100(4° overnight). High-pressure and temperature Tris-EDTA, pH8.0 was used for antigen retrieval. Negative control (right) obtained from antibody was pre-absorbed by immunogen peptide.



Western blot analysis of lysates from COS7 cells, using CD2 Tail-binding Antibody. The lane on the right is blocked with the synthesized peptide.



Western blot analysis of the lysates from HeLa cells using CD2 Tail-binding antibody.